

When it comes to delivering the best temporary access solution, Sommerfeld Flexboard is second to none!
In fact, Sommerfeld is so proud of its unrivalled reputation that we developed a customer charter:

The same named contact for the duration of your project

Free site inspection

Free site survey

Free, fully detailed, no-obligation quotation

Site drawing based on your own plans for compatibility compliance

Proactive Health and Safety assessment

Competency document

Comprehensive method statement

Efficient installation by our own expert team

On time, off hire service

Sommerfeld

FLEXBOARD

Sommerfeld

Sommerfeld Flexboard
Upper Coalmoor Horsehay,
Telford, Shropshire TF4 2PX
Tel: 01952 501155
E: info@sommerfeld.co.uk W: www.sommerfeld.co.uk



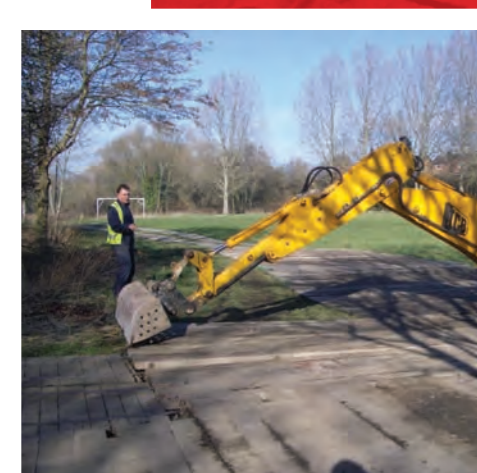
Sommerfeld Flexboard is part of SPH Plant LTD

keeping things moving!

PORTABLE ROADWAY SOLUTIONS

keeping things moving!

PORTABLE ROADWAY SOLUTIONS



Sommerfeld

For over 50 years Sommerfeld Flexboard has been supplying temporary access solutions to the agricultural, construction, industrial, rail and events sectors.

Sommerfeld's range of portable roadways and excavation matting are low cost, low maintenance and high performance.

If you need site access and want a swift, cost effective and robust solution don't just think portable trackway, think Sommerfeld Flexboard!

Choose Sommerfeld, choose peace of mind:

- Free site visit
- Expert advice
- Competitive prices
- Delivery throughout the UK
- Expert installation service
- Dedicated account handler, to coordinate your project from start to finish

Flexboards



Sommerfeld Flexboards The cost effective solution on difficult terrain.

Hire from Sommerfeld and you're hiring a quality product from a company that has amassed years of experience at solving access problems in difficult terrain.

Flexboards are ideal for the construction, civil engineering and ground works industries.

Flexboards are perfect for providing temporary ground protection and access for outdoor leisure events.

- **SAFE:**
Non-slip surface.
- **DURABLE:**
Heavy duty ground protection/temporary access mat.
- **QUICK TO INSTALL:**
1.06m wide x 2m long and 50mm thick.
- **ROBUST:**
Constructed from tough hardwood and bound by mild steel bands, Flexboards take the strain no matter what you throw at them.
- **TOUGH:**
Support traffic up to 32 tonnes.
- **ADAPTABLE:**
Bars looped at each end allow a dowel to be inserted to form flexible connections.
- **USER FRIENDLY:**
Easily laid and relocated and virtually vandal resistant.

Flexboards provide a safe and secure working platform.
Flexboards spread weight and protect existing surfaces.

Ideal for temporary roadway solutions, Flexboards provide safe and secure working platforms, flooring for temporary structures and temporary access and parking for events and sites.

Specification

- Dimensions: 2m long x 1.06m wide
- Thickness: 50mm
- Weight: 102kg

PORTABLE ROADWAY SOLUTIONS

EuroMat



Choose EuroMat, choose unrivalled performance

Combine Sommerfeld's legendary levels of customer service and reliability with EuroMat's proven ability to deliver temporary access solutions that protect the ground and provide safe and stylish pathways for both pedestrians and vehicles you are on a winner.

EuroMats are ideal for the construction, civil engineering and ground work industries.

Euro Mats are perfect for providing temporary ground protection and access for outdoor leisure events.

- **SAFE:**
Euro Mat features the industry's most effective non slip, non-trip surface.
- **DURABLE:**
Heavy duty ground protection/temporary access mat.
- **QUICK TO INSTALL:**
1.2m wide x 2.4m long and 12mm thick.
- **ROBUST:**
Weigh 36 kg; compression moulded, not extruded.
- **TOUGH:**
Unbreakable up to 80 tonnes
- **ADAPTABLE:**
A wide range of connection options are available for long term deployment and demanding applications such as steep or sloping terrain.
- **USER FRIENDLY:**
Extra hand cut outs - great for offloading from trucks.

EuroMats are light enough for two men to handle.

EuroMats prevent vehicles getting bogged down.

EuroMats significantly reduce damage to ground, including heritage and eco-sensitive areas.

EuroMats avoid the need for reinstatement.

EuroMat's unique 'mud dispersing' non-slip chevron grip-surface is the most effective on the market.

EuroMats can be connected at right angles to one another to form pads and turning areas.

Specification

- Dimensions: 2.4m long x 1.2m wide
- Thickness: 12mm
- Weight: 36kg

Pipeline-Excavator-Crane Mats

Dealing with waterlogged or particularly unstable ground or simply need to create a firm base for heavier machinery? Sommerfeld Flexboard has the perfect solution!

Our hardwood mats are used extensively in oil, gas, water, civils and construction industries where land needs to be stabilised or to protect sensitive areas or underground services.

Renowned for their high breaking strength and durability, they have become the first choice for the marine sector due to their ability to withstand pressure and strong weather conditions.



Specification

- Dimensions: 3.5 or 5m long x 1m wide
- Thickness: 70mm, 100mm or 150mm

PORTABLE ROADWAY SOLUTIONS