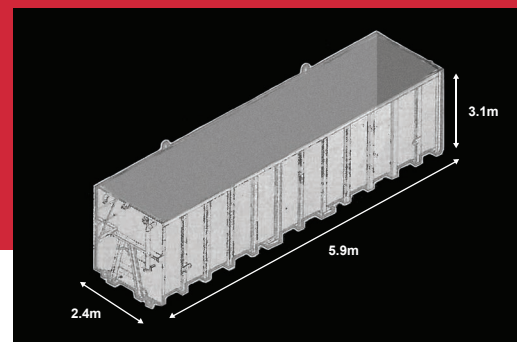


# 40m<sup>3</sup> HOLDING TANK



## Weights / Measurements

### Volume

40,000 Litre, 40m<sup>3</sup>, 271 BBL, 9,500 Gals

### Dimensions

5.9m L x 2.4m W x 3.1m H demounted

### Weight

5,000kg (approx) Empty

## Technical

### Pipe Connections

Fill Pipe 4" + valve + coupling  
Discharge 6" front and rear + valve + couplings  
Discharge 6" + valve + couplings  
High level 4" additional connections front & rear  
All connections generally ANSI 150  
Sampling offtake  
Top jetting ports 6" (Adaptors to PN16 available)

### Contents Gauging

Sight tube/Calibrated float gauge/Radar (Telemetric)

### Top Access Platform

Integral access platform c/w steps, handrails, safety swing gate

### Internal Coating

Chemical resistant epoxy lining.  
(Customer to supply MSDS for tank contents compatibility checking)

### Delivery

Roll-On-Off or liftable by crane (pre-slung lifting gear supplied)

### Ground Pressure

536 kPa Over 2 Skids when full of liquid@ SG 1.12

## FAST

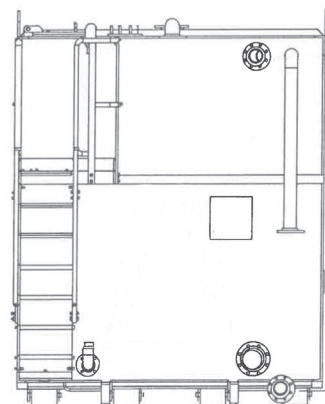
*We deliver  
be Roll-off or  
pre-slung for  
crane lift*

## COMPACT

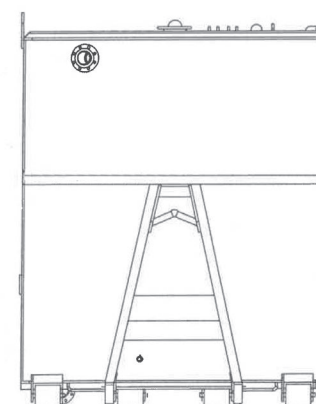
*Optimised  
footprint for  
minimal site  
space*

## VERSATILE

*Multiple  
connections and  
applications*



REAR



FRONT

