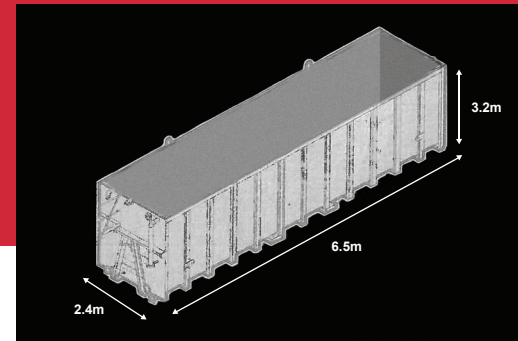


50m³ HOLDING TANK



Weights / Measurements

Volume

50,000 Litre, 50m³, 314 BBL, 11,000 Gals

Dimensions

6.5m L x 2.4m W x 3.2m H demounted

Weight

7,000kg (approx) Empty

Technical

Pipe Connections

Fill Pipe 4" + valve + coupling
Discharge 6" front and rear + valve + couplings
Discharge 6" + valve + couplings
High level 4" additional connections front & rear
All connections generally ANSI 150
Sampling offtake
Top jetting ports 6" (Adaptors to PN16 available)

Contents Gauging

Sight tube/Calibrated float gauge/Radar (Telemetric)

Top Access Platform

Integral access platform c/w steps, handrails, safety swing gate

Internal Coating

Chemical resistant epoxy lining.
(Customer to supply MSDS for tank contents compatibility checking)

Delivery

Roll-On-Off or liftable by crane (pre-slung lifting gear supplied)

Ground Pressure

536 kPA Over 2 Skids when full of liquid @ SG 1.12

FAST

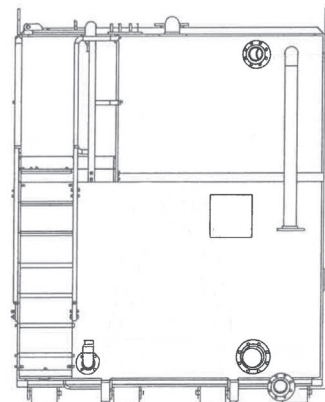
*We deliver
be Roll-off or
pre-slung for
crane lift*

COMPACT

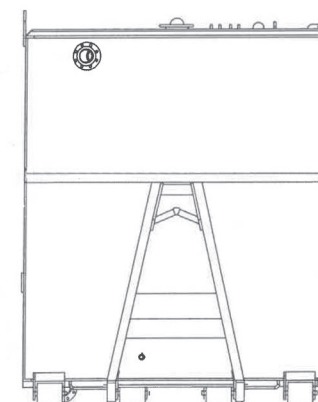
*Optimised
footprint for
minimal site
space*

VERSATILE

*Multiple
connections and
applications*



REAR



FRONT

