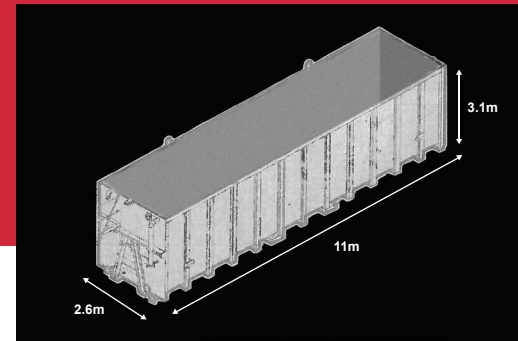


75m³ HOLDING TANK



Weights / Measurements

Volume

75,000 Litre, 75m³, 440 BBL, 15,000 Gals

Dimensions

11m L x 2.60m W x 3.1m H demounted

Weight

11,000kg (approx) Empty

Technical

Pipe Connections

Fill Pipe 4" + 6" flange

Discharge 6" front and rear + valve + flange fittings

Discharge 6" + valve

High level 4" additional connections front & rear

All connections generally ANSI 150

Sampling offtake

Top jetting ports 6" (Adaptors to PN16 available)

3x Hoppers with desludge valves

5x Baffles

Contents Gauging

Sight tube/Calibrated float gauge/Radar (Telemetric)

Top Access Platform

Integral access platform c/w steps, handrails, safety swing gate

Internal Coating

Chemical resistant epoxy lining.

(Customer to supply MSDS for tank contents compatibility checking)

Delivery

Roll-On-Off or liftable by crane (pre-slung lifting gear supplied)

Ground Pressure

536 kPA Over 2 Skids when full of liquid@ SG 1.12

FAST

*We deliver
be Roll-off or
pre-slung for
crane lift*

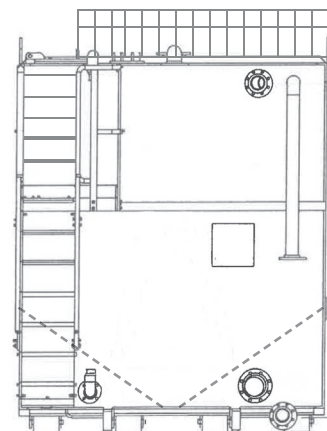
COMPACT

*Optimised
footprint for
minimal site
space*

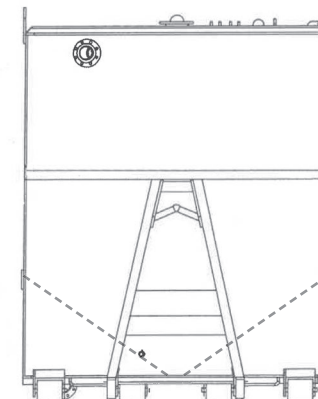
VERSATILE

*Multiple
connections and
applications*

ACCESS PLATFORM



REAR



FRONT

