

# Product & Services Catalogue



# RAIL MOUNTED RRV JETVACS

Key features of our purpose-built RRV JetVacs:

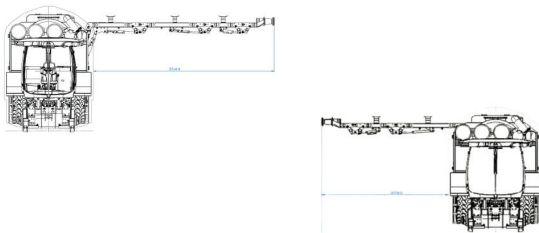
- Built in recovery system, utilising the second engine which controls all the main functions, power the rail system and off-track the machine should there be a main engine failure
- 28GPM Jetting Pump at 2000 PSI
- 5000 CFM suction pump
- 5000 ltrs of clean water
- 5000 ltrs waste/debris tank
- VacEx boom allows for excavation work to be completed as well as providing suction when completing catchpit cleaning
- Innovative internal pusher plate in debris tank to expel ballast and silt into a skip or trailer on track or off track without the need to tip the tank - only one of its kind anywhere
- 4-wheel drive
- 4-wheel steering / crab steering for more manoeuvrability on tight access points
- 360° camera system
- Dual Agent Remote Fire Suppression
- 100m of ¾ inch jetting hose
- Dual guage to suit both English & Irish Railways

Pushing the boundaries of what is possible on Rail with new safe dig options.

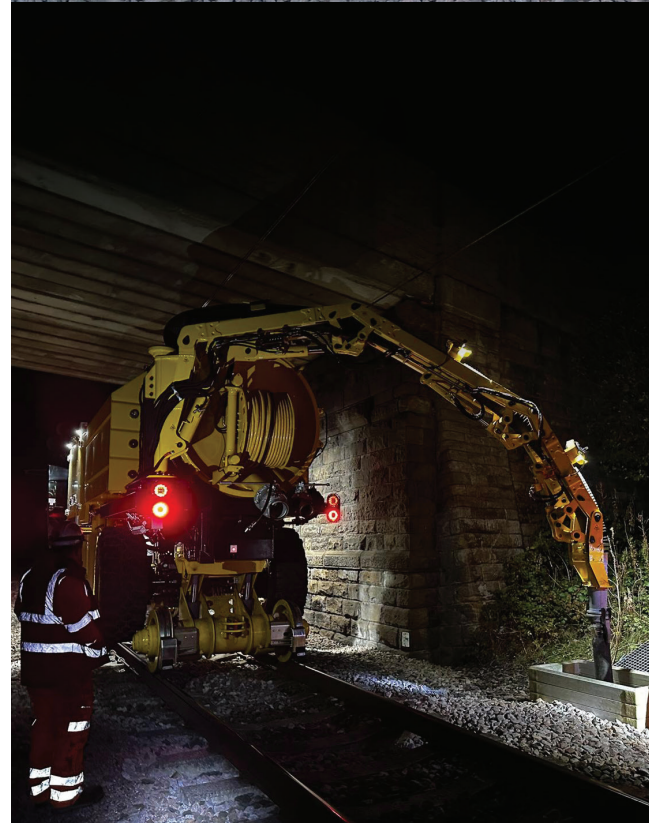
Our revolutionary pusher plate allows us to eject loads from the rear of the machine while still on track... even under OLE!

This provides our clients with maximum productivity and value for money.

A max reach of nearly 6m from the left of the machine



Max reach of nearly 4m on the right of the machine



# OFF ROAD RUBBER TRACKED JETTERS AND VACTORS

SPH owns a fleet of large capacity rubber tracked mounted Jetters and Vactors. These machines have been built in-house by SPH and are ideal for difficult to access culverts across fields and rough terrain. The wide rubber tracks result in low ground pressure which has environmental benefits for flora and fauna, and negates the need to install temporary roadways, saving time and money.

## Rubber Tracked Hiab

We also have a rubber tracked flat bed with a 27 t/m Hiab which can transport pumps and other equipment across soft ground to the worksite.

---

## TracVac Key Features:

45gpm jetting @1500 psi  
 4000cfm suction  
 7000 ltrs clean water  
 6500 debris  
 Rubber tracks for low ground pressure

---

## TracJet Key Features:

98gpm jetting @ 1500 psi ideal for culvert cleaning  
 14,000 ltrs clean water only  
 Low ground pressure rubber tracks

---

## TracRecycler Key Features:

96gpm jetting @ 1500 psi  
 1000 cfm suction  
 10,000 ltr tank, allowing for the wastewater to be sucked up and then recycled for jetting water continuously  
 Low ground pressure rubber tracks

---

## 6 ton TracJet Key Features:

Smaller rubber tracked "van pack" type jetter ideal for smaller off-road jobs  
 3,000 ltrs clean water  
 18gpm @ 3000 psi on ½ inch jetting hose  
 Low ground pressure rubber tracks

---

## AgriVac:

Liquid ring vacuum system 2000 cfm suction  
 65gpm @ 2000psi  
 6000 ltrs debris tank  
 6000 ltrs clean water  
 100 mts 1" jetting hose  
 6" Boom Pipe  
 Cable Remote for boom  
 Driven Trailer Axles

---

## Track Reeler:

This can be utilised to work with off-road and road-going jetters

Rubber Tracked Hiab



TracVac



TracJet



AgriVac



# ROAD GOING JETVAC UNITS & DISABS

---

## 32t Titanwhale 4 Pro Scania P450

### Primary Jetting Hose Reel

- 73gpm @ 2466 psi
- 200 mts 1" jetting hose

### Secondary Jetting Hose Reel

- 60 mts 1/2" jetting hose
  - 1800 cfm Liquid Ring vacuum system
  - 14,600 ltrs tank capacity
  - Sewer Flex 6" suction lifting boom
  - Boom suction hose reaches 8m below ground without attaching additional hoses
  - Radio remote controlled and secondary cable remote for vactor/jetter
  - Hydraulically operated moving division and discharge plate
  - Hand wash unit
  - Chapter 8 signage
  - Reversing camera
- 

**Vanpack Jettors** are typically mounted inside small 3.5t units. Additionally, we have several self-contained units on skid mounts, equipped with direct drive diesel engine, water tank and jetting hose. These units can be easily transported to site and placed onto rail carriages. Our Van Pack units are capable of producing high pressure (3000psi) low volume (12 gallons per minute) water jetting for small diameter drains or jet washing services.

---

**Disab's** and vacuum excavators can be utilised for removal of dry materials, especially when underground services may be present, or the spills occur in hard-to-reach areas. These units offer extremely high suction capabilities, enabling the efficient and clean removal of soil, ballast, and other materials.



### Low Volume Combi Units

16gpm @ 2000 psi  
 1200 ltrs clean water / 5000 ltrs debris  
 1/2" jetting hose 400 cfm suction

---

### Recycler Unit

96gpm jetting @ 3000 psi  
 1500 cfm suction  
 12,000 tank capacity allowing for waste to be sucked up and then recycled for jetting water continuously

# ROAD HAULAGE SERVICES

---

SPH Plant offers a wide range of specialist haulage services to a variety of sectors. From tankering of waste to movement of abnormal loads and lifting services we can help with it all.

For waste removal SPH Plant is able to offer tankers from 5t to 28m<sup>3</sup> capacity. For the smallest of accesses to the biggest site, SPH Plant have what you need to keep things moving.

SPH Plant can help with the provision of both potable and non-potable clean water to your site and events. From 2,000 – 30,000ltr. Delivery options are available to suit any site requirement.

Curtain-sider, flatbed and low loader haulage from 7.5t to 80t allows us to move almost anything on the road.

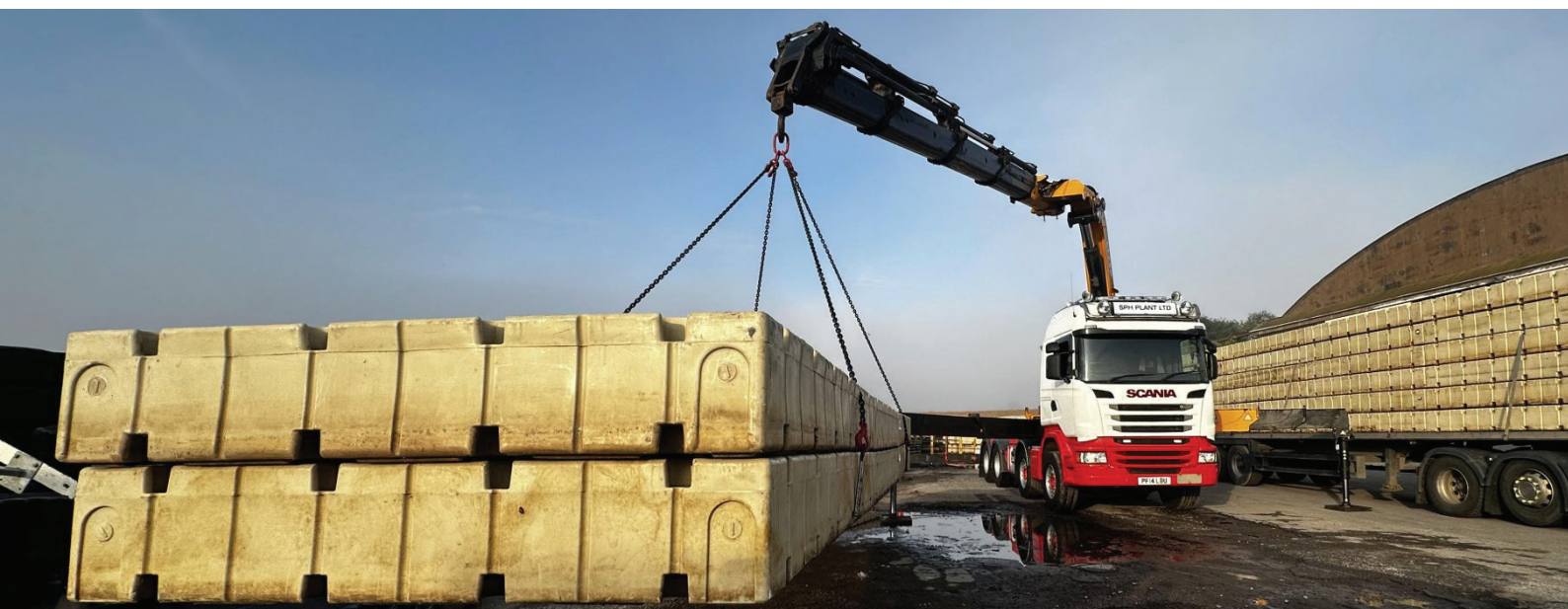
When loading and unloading is an issue on site SPH Plant can assist with any kind of lorry loading, from Moffetts to Hiabs we are able to find the most practical solution for any task. Our Hiab fleet ranges from 20t/m to 100t/m. With the ability to produce our own Lift Plans and coordinating slingers and banksmen, lifting operations are always in safe hands with us.

---

## Emergency Response

Our company is available 24/7, 365 days a year, to meet your needs. During out-of-office hours, calls to our office number are automatically transferred to an On-Call Manager, ensuring you receive prompt assistance at any time.

- For the last decade SPH Plant has been a reliable source for emergency response teams across the length and breadth of the country. We can provide tankering and removal of flood water, over pumping and flow diversion then finally jetting and surveying of the root cause.
- Not all spills and issues are caused by liquids; some problems affecting the drainage infrastructure can involve solid materials. To address these, we recycle much of the waste produced at our Headquarters. However, If a quicker turnaround is needed or the distance makes recycling at our Headquarters impractical, we have partnerships with several companies across the country to assist with disposal.
- We have reacted to issues such as flooding and landslides, carrying out remedial work as required.
- Main office number is always manned and diverted to a member of staff that is on call during evenings
- Due to a large amount of kit owned by SPH Plant we can provide appropriate reaction times
- SPH Plant provides all its own transport including Hiabs to reduce reaction times



# STORAGE TANKS & DIGGERS

We offer a versatile range of tankers in various combinations and sizes to meet your needs. Articulated tankers, with capacities up to 30,000 litres, are the most cost-effective solution for transporting water. However, due to the constraints of railway infrastructure, accessing certain sites with large tankers can be challenging. Therefore, we tailor our equipment to suit the specific requirements of each job. Our fleet includes options from 5,000-litre 12-tonne rigid tankers to 30,000-litre articulated tankers.

If water storage on site is needed, then temporary storage tanks can be used. These can be used for clean and dirty water. Tanks hold from 2,500ltrs to 60,000ltrs.



SPH Plant Ltd proudly owns and operates a versatile fleet of 360 excavators, ranging from compact 5-tonne machines to powerful 22-tonne models, including both standard and long-reach configurations. Each machine is equipped with a wide selection of attachments, including advanced tilt-rotating buckets, ensuring maximum efficiency and adaptability on every project.

To support safe and uninterrupted operations, all our excavators are fitted with height and slew restrictors, enabling us to work confidently alongside open railway lines and busy highways without compromising safety or productivity.



# LIGHTING TOWERS, PUMPS & PIPE WORKS

---

SPH Plant maintains an extensive and readily available stock of pumps and pipework, allowing us to respond rapidly and effectively to emergency flooding situations at very short notice. Our experienced team can mobilise quickly, ensuring minimal disruption and swift mitigation of flood risks.

In addition to our pumping solutions, we offer a range of high-quality lighting towers designed to keep your site fully operational, whatever the conditions. Available for standalone hire or as part of a complete, integrated package of works, our lighting solutions ensure safe, efficient, and productive operations in low-light and night-time environments.

## **Our fleet includes:**

Hydraulic pumps ranging from 2" to 6"

Centrifugal pumps ranging from 3" to 6"

All of our pumps are supplied with environmental protection in mind. Each unit is either fully self-bunded or fitted with a drip tray, significantly reducing the risk of fuel or oil contamination and ensuring compliance with environmental standards.

Silt busters can be used in conjunction with pumps in some areas to avoid contamination.

Lighting towers come fitted with two 230 volt 16amp sockets and powerful LED lights.



# OnRoad, OffRoad, OnTrack

---

*What we do Never Stops*

